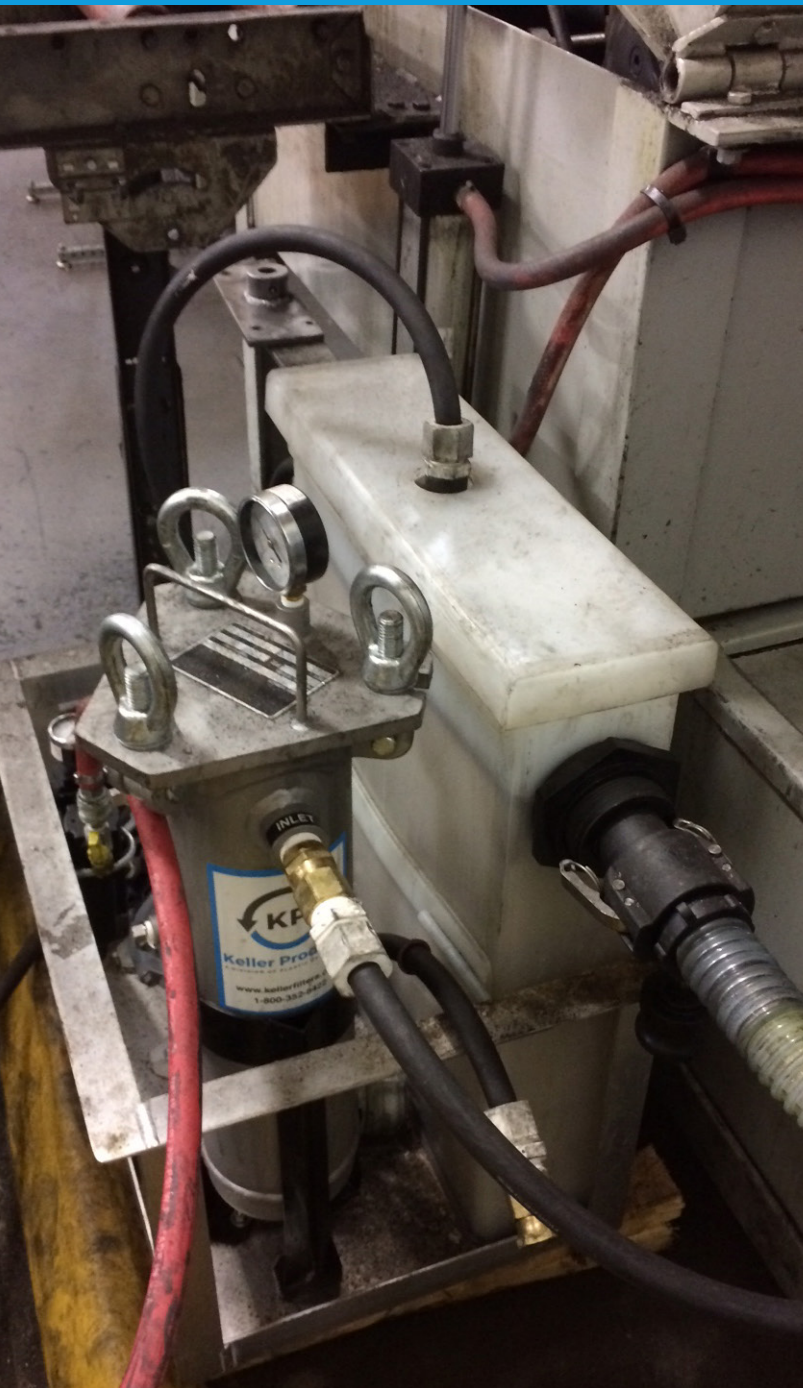


Oil Separators For Hot Wash Water

Remove oil from aqueous cleaning solutions utilizing patented oil separation technology



ADVANTAGES:

- Patented coalescing media package allows for compact design
- Rugged fabricated plastic design keeps units extremely cost effective
- Units ship via UPS requiring only a shop compressed air connection to run

APPLICATIONS:

Keller Units separate oil from aqueous parts washer water and return the cleaned water to the feed tank at a flow rate up to 180 GPH. The model #385 has a stainless steel bag filter for heavy solids loading, while the TKO-10-HT has a cartridge filter with replaceable filter element for lighter solids loading.

Specifications and Ordering Information

TKO-10-HT

Cleaned Water Flow Rate	180 GPH
Filter	Cartridge Filter
Max Temp., Continuous Operation	160°F
Inlet Devices Provided	1 each 555-08 fixed inlet 1 each RSM-3 floating inlet
Compressed Air Requirement	1/4" NPTF fitting
Electricals	None
Dimension, LxW	14" x 14"
Shipping Weight	47 lbs.
PRICE	\$1995.00



MODEL #385

Cleaned Water Flow Rate	180 GPH
Filter	Stainless Bag Filter
Max Temp., Continuous Operation	160°F
Inlet Devices Provided	1 each 555-08 fixed inlet 1 each RSM-3 floating inlet
Compressed Air Requirement	1/4" NPTF fitting
Electricals	None
Dimension, LxW	20" x 20"
Shipping Weight	100 lbs.
PRICE	\$3795.00



ADDITIONAL INLET DEVICES

Fixed Inlet Device, High Temp. — #555-08	\$150.00
RSM-3 Floating Inlet Device	\$125.00

REPLACEMENT POLYPROPYLENE FILTER BAGS

NOTE:

- 5 EACH 25-MICRON POLYPROPYLENE FILTER BAGS SUPPLIED WITH MODEL #385
- 3 EACH REPLACEMENT CARTRIDGE FILTERS SUPPLIED WITH TKO-10HT

Model #385 (RAP-25) Pack of 5 each 25-micron bags	\$40.00
--	----------------

Model TKO-10HT (R10-3150) Replacement cartridge filters	\$6.25
--	---------------